

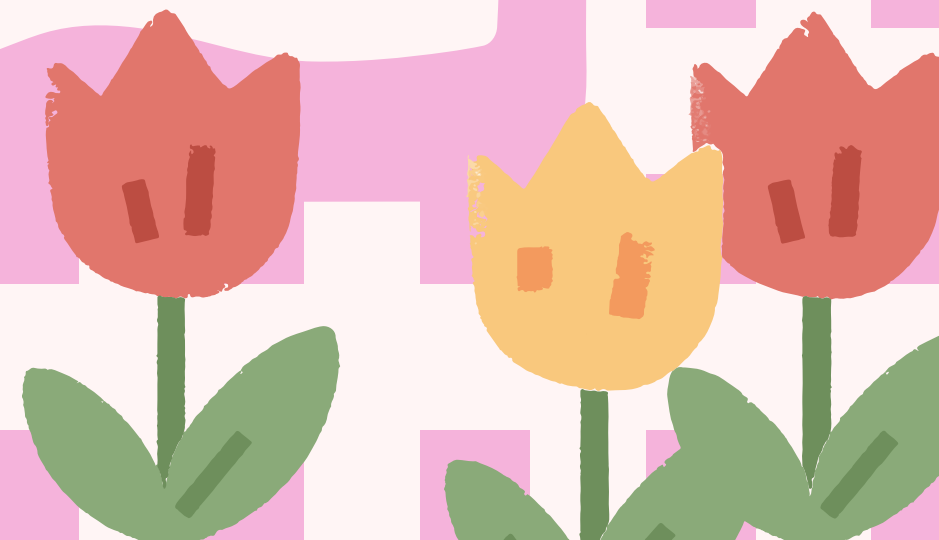
6

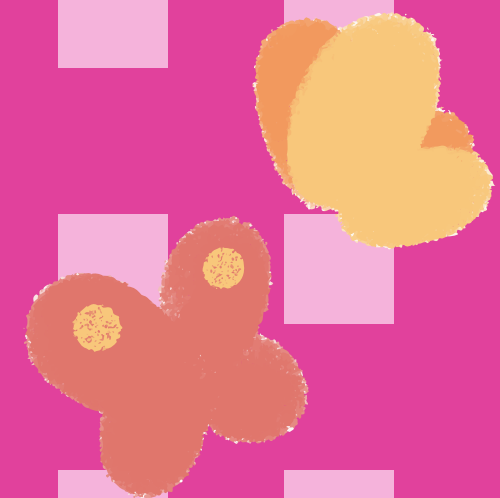


Welcome to your

Minikin Paint a Pot Kit

instructions, help and tips!

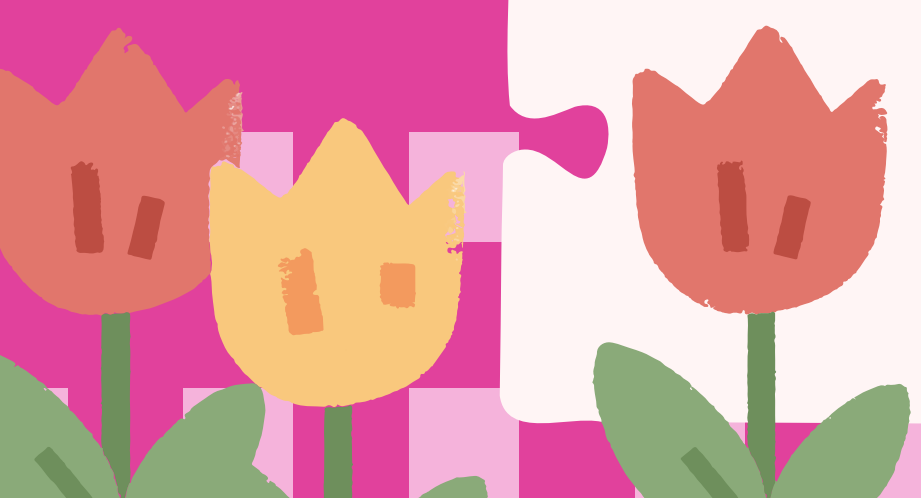


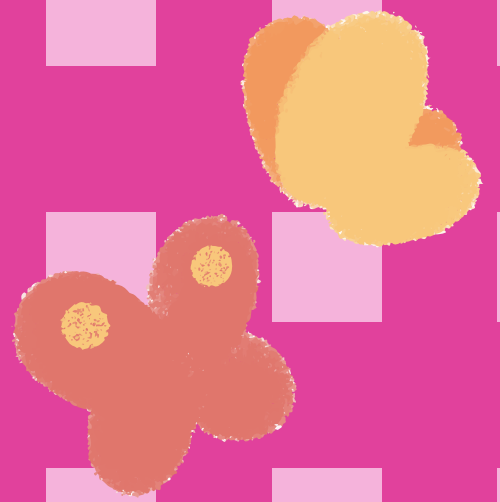


Plan Your Pot Design

Design
it!

- You may use cheap felt tips to sketch an outline on your pot, felt tip will disappear in the kiln.
- Don't use pencil or sharpie, they may stain the pot!
- Be as creative with your design as you like.



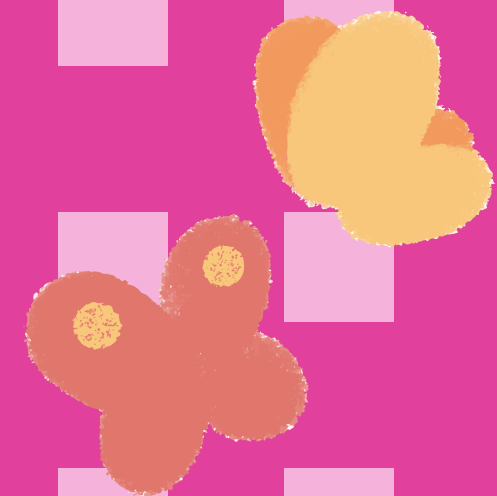


Design
it!

Time To Paint Your Pot

- Only use the paints provided in your kit, these are glazes. Any other paints such as acrylic will vanish in the kiln and damage your pot.
- Aim to get 3 coats of paint to avoid seeing brush strokes.
- You may layer paint, just make sure each colour is 3 coats.
- Any parts left unpainted will be white & shiny once kiln fired.
- Use black paint at the end.

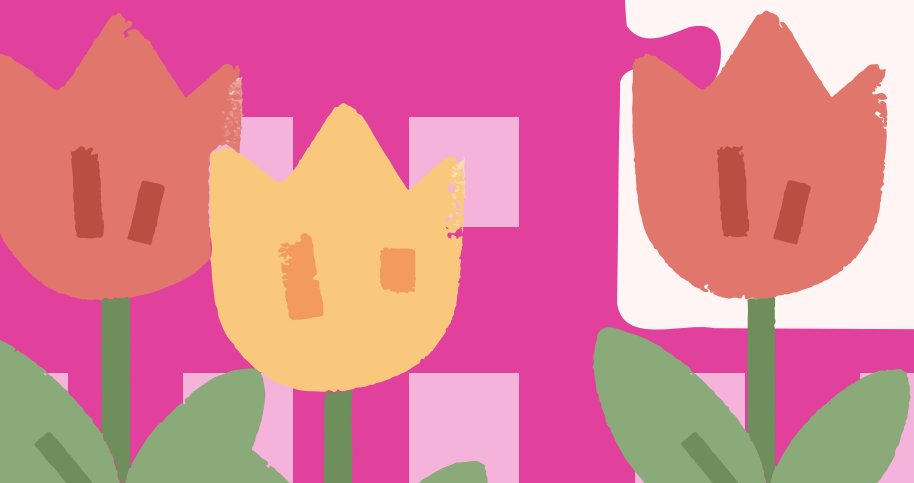


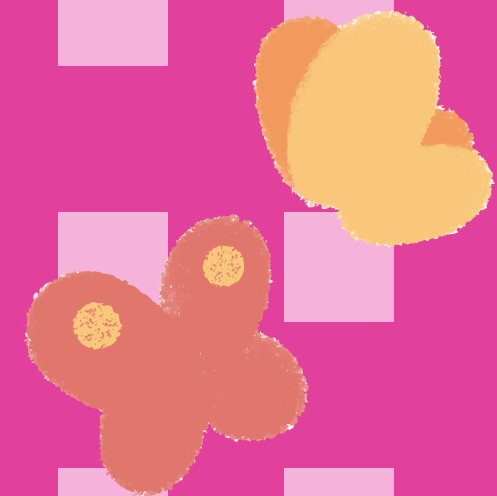


Top Tips

Design
it!

- If you make a mistake wait for the paint to dry then gently rub away with a dry tea towel.
- Black paint won't come off so use this last & carefully!
- In between colours wash your brush & dry on tissue
- You can paint anywhere you like on the pot, it is all food safe.
- If you'd like writing adding but feel scared to add it.. add a note when returning your pot for firing & we'll add at Minikin.





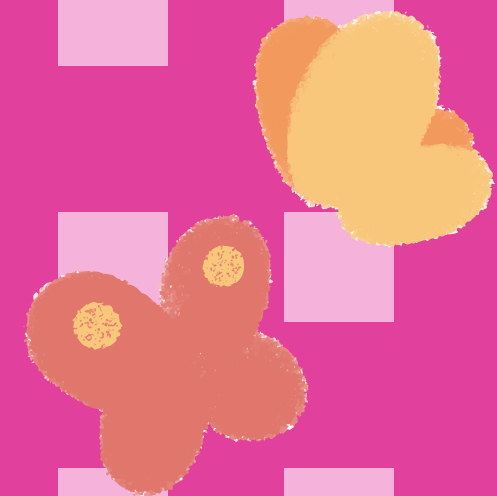
Design
it!



Top Tips

- All our paints are lead & toxic free, they are water based & simply wipe away with a wet cloth.
- Our paints are safe to use for hand & footprints, simply wash hands with water or a baby wipe afterwards.

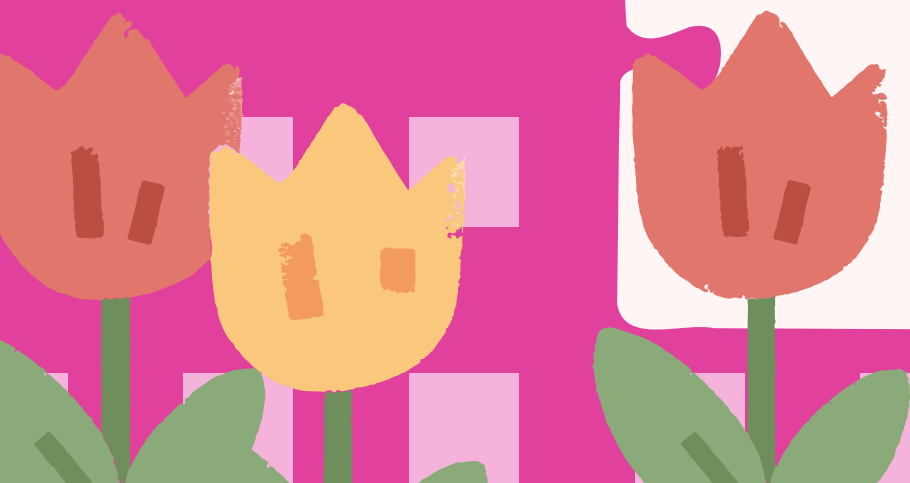




Design
it!

When You've Finished

- When you have finishing painting your masterpiece pop it back in the box with a note of any names or messages you'd like adding, if any, and return to Minikin Art Cafe for kiln firing.
- Your work of art will be ready to collect 2 weeks later!!!



Thank You For
Reading &
Enjoy!

Love, Minikin x

